

WHAT IS DRY EYE



Dry eye is a common condition in which your eyes don't produce enough tears to provide adequate lubrication to the surface or the tears evaporate too quickly - leading to discomfort and dryness.

Factors such as age, gender, specific eye conditions (ocular rosacea, blepharitis), medical conditions, medications, use of electronic devices, contact lenses, makeup, and the environment play a significant role in contributing to dryness.

The most common form of dry eye is Meibomian Gland Dysfunction (MGD), which accounts for 86% of all dry eye!

Your meibomian glands produce oil to lubricate your eyes when you blink.

However, the oil in the glands can harden or become clogged, preventing the glands from functioning properly. If this goes on too long, your glands can permanently suffer and die off.

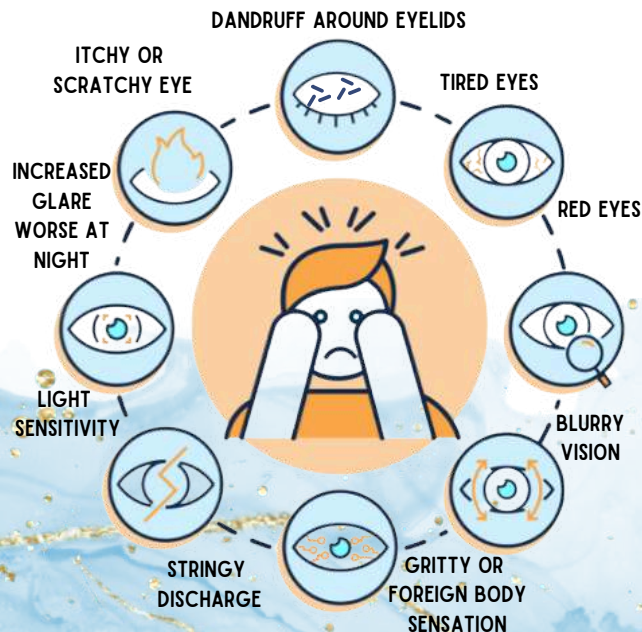
When left untreated, dry eye becomes a chronic, progressive disease!

CONTACT US FOR
A DRY EYE
ASSESSMENT!



(361) 485-9421

SYMPTOMS OF DRY EYE



ADVANCED

Vision Care

SUFFERING FROM DRY EYES?



finally a real solution for
DRY EYE RELIEF

INTENSE PULSE LIGHT (IPL)

Intense Pulse Light (IPL) is an FDA approved treatment that targets inflammatory blood vessels along your eyelids (ocular rosacea). IPL eliminates this inflammation, thereby addressing the underlying cause of Meibomian Gland Dysfunction (MGD). IPL originated in dermatology to erase sun spots - patients notice a more bright, even-toned complexion.



LOW-LEVEL LIGHT THERAPY (LLLT)

Low-Level Light Therapy (LLLT) is a treatment used to increase tear production and has anti-inflammatory properties that help to alleviate the symptoms of dry eye disease.

LLLT uses low levels of near-infrared light, of which is non-invasive, warm, soothing and painless during treatment. This therapy is effective by stimulating cell production in the eyes so that they function better. LLLT is used to increase blood circulation and production of natural - of which help to unclog the meibomian glands for dry eye relief.



MIBO THERMOFLO EXPRESSION

MiBo Thermoflo is a device used to target the meibomian glands to increase function, improve lipid health, and address obstructed glands. Lipid secretions are softened by gentle ocular massage to preserve production and function of the tears.



AMAZING

before and after's



BEFORE IPL TREATMENT



AFTER 4 IPL TREATMENTS



EYELID TELANGIECTASIA
(INFLAMED BLOOD VESSELS BEFORE VS. AFTER IPL)



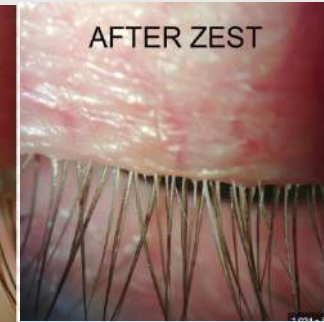
REDNESS REDUCTION POST 4 IPL SESSIONS

ZEST EYELID CLEANING

Blepharitis is a common eyelid condition resulting from insufficient eyelid hygiene. This can lead to an overgrowth of bacteria and inflammation that contribute to burning, stinging, and crusting along the eyelids and lashes. Zest is an in-office gel eyelid cleaning treatment to rid the eyelid surface of debris, bacteria, and mites. The ZEST cleanser contains refined okra extract that acts as a deep cleaner, powerful to rid the surface of irritants..



BEFORE



AFTER ZEST

Z
Zocular

THERMAL EYELID PULSATION

Thermal eyelid pulsation is a treatment based on the application of delivering heat (thermal pulsation) to eyelids to liquify oil trapped within the meibomian glands lining the upper and lower eyelids. Pressure is applied in conjunction with heat to improve drainage of the glands.



CALL TODAY TO SCHEDULE!



(361) 485-9421

www.avcvictoria.com